



Straker (ASX:STG): Alchemy in the AI Revolution

How We're Mining the Most Valuable Asset of the 21st
Century: Verified AI Data.

25 June 2025

The AI Gold Rush is Here

A New Industrial Revolution

AI disrupting every industry globally. STG has reinvented the AI translation process for a US\$76billion industry

The Prize

Successful AI adoption creates enormous value as Revenue and value goes from traditional to AI processes

The Problem

AI can only be as good as the data it's built on. Without high-quality, well-structured data, AI models struggle to deliver accuracy, insight, and value—ultimately limiting their impact on productivity

A Rare Asset

Few profitable, listed AI companies on ASX. Most AI focused growth companies are private startups. STG has a mature business base with an AI startup mindset and significant opportunity

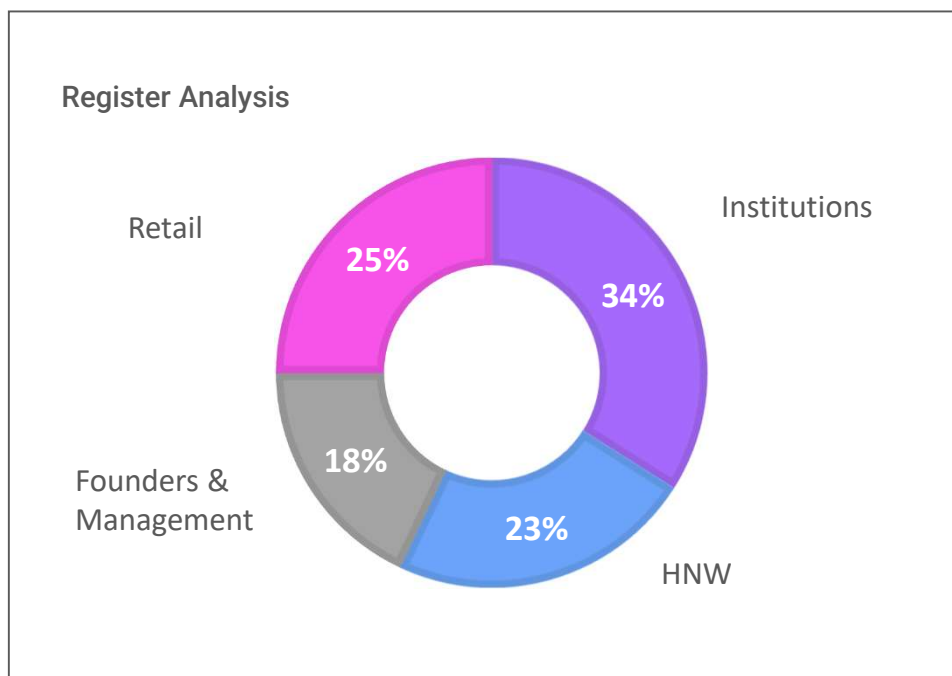


Profitable, strong balance sheet and cash flow positive



ASX:STG

FY25 Results (April 2024 – March 31 2025)



\$44.9M

Revenue

FY25 Guidance \$43-45m

\$4.8M

Adj. EBITDA

\$12.9M

Cash in bank

Strong liquidity position

\$3.4M

Operating Cash Flow

EV/EBITDA: 5.7*

Nil

Debt

Low leverage ratio

\$7.6M

R&D Investment

Annual investment in R&D

67.0%

Gross Margin

*Based on a share price of AU\$0.56 (15 May 2025) converted at an exchange rate of NZD/AUD 0.92

A Decade of AI Evolution: Our Journey & Our Edge

1

The Foundation (2011-2020)

Pioneered AI platform for language data.
Mastered human-in-the-loop model.
Built bedrock for future AI development.

2

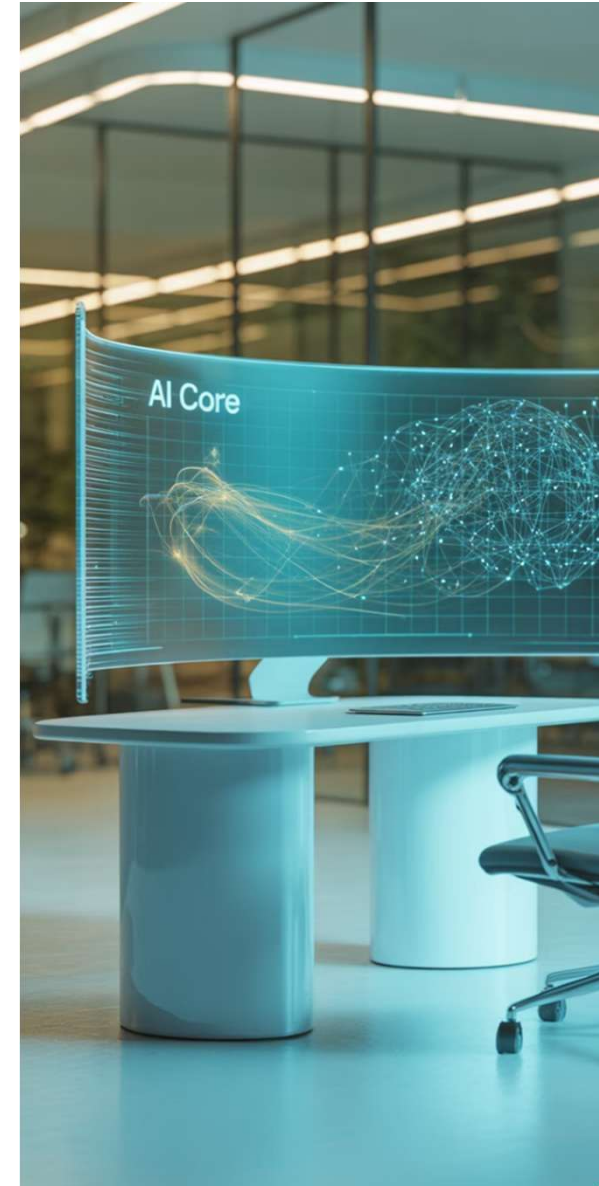
The Transition (2020-2024)

Built dedicated AI team for LLMs.
Developed proprietary Tiri and Tiri-X models.
Launched VERIFY AI platform.

3

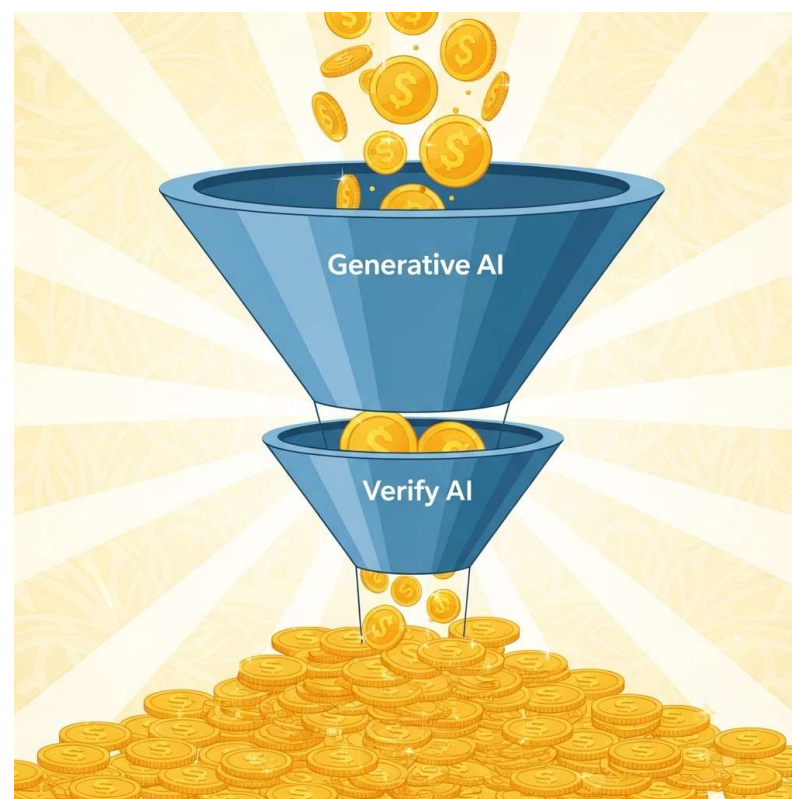
The Expansion (2024 onwards)

Leveraging enterprise-grade platform.
Utilising AI model building expertise.
Expanding IBM partnership for high-value market.



Our Niche: AI Verification

- Core business in AI translation verification using proprietary AI tech.
- Next trillion-dollar AI layer: verification, not generation.
- Need for human-verified quality layer exploding in translation and beyond.
- Experts turning low-cost AI into high-value content.
- High-margin future of the industry.



SwiftBridge AI: Solving the complex problem of translating Japanese financial data using custom AI models

- ✦ Tokyo Stock Exchange mandatory English translation disclosure rules impacting over 1,600 listed entities
- ✦ Roll-out over H1 FY26
- ✦ Built in partnership with IBM
- ✦ Major technology distribution partner (Iguazu) signed with a 60 strong sales team active



AI Innovator with Global Reach

Strategic Reach

170 staff, 10 countries, channel and technology partnerships with IBM, Salesforce, Microsoft



Two Markets, One Platform: Our Path to Exponential Growth

AI Translation Verification

US\$76B global language services market.

Providing essential high-margin verification layer.

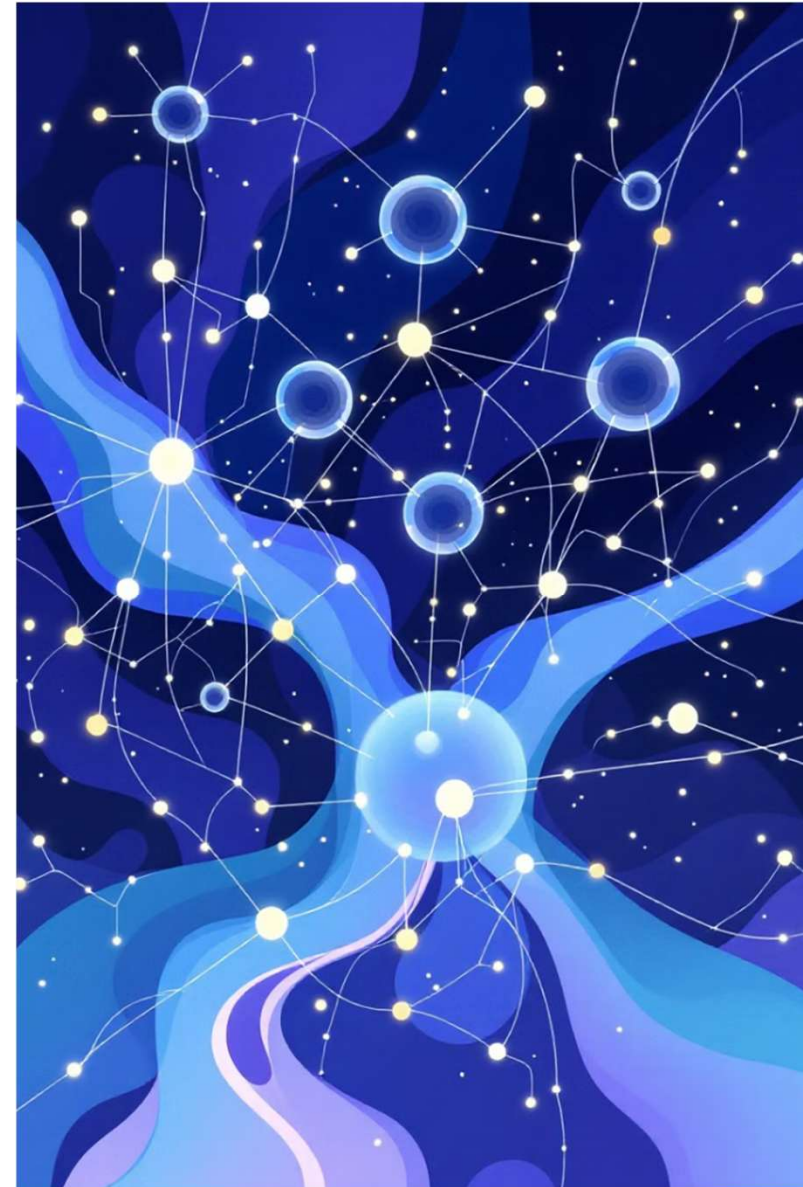
Profitable leader with VERIFY AI technology.

AI Data & Model Building

'Blue Sky' opportunity powering entire AI industry.

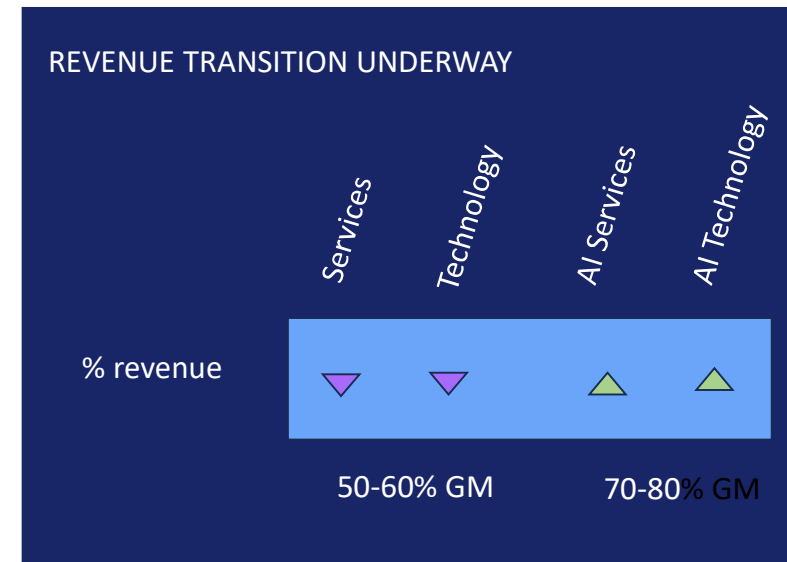
Scale AI, a company with similar model validating technology valued at US\$30B.

Enterprise-ready platform with decade of experience.



Profitable Growth & AI-Driven Margin Expansion

- 1** Current State
Cash flow positive, profitable, ~2,000 corporate customers
- 2** Transition Period
Legacy translation to high-margin AI verification revenue
Transition from enterprise SaaS offering to AI agent based automation with workplace apps
- 3** Future Position
Higher margin, SaaS + AI consumption token revenue model



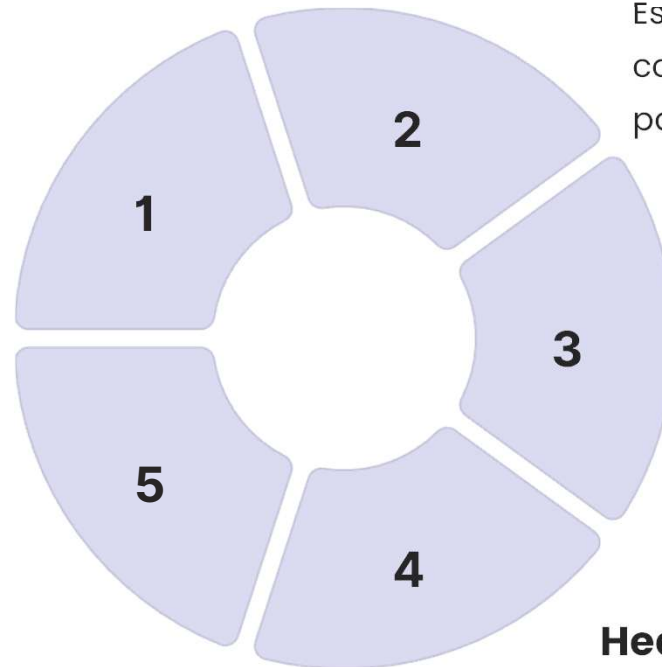
Investment Highlights

Proprietary Technology

Tiri & Tiri-X AI models with 15 years of data advantage

Large Market Opportunity

Operating in the US\$76B global language services market and larger AI market



Growth Infrastructure

Established presence in 10 countries with strategic partnerships

AI Revenue Growth

Transitioning to high-margin AI-powered services

Healthy Balance Sheet

Profitable, cashflow positive with strong financial position

Thank You / Q&A

Grant Straker

grant@straker.ai

www.straker.ai

ASX:STG

Disclosure statement

This presentation contains general information about Straker Ltd. and its activities as of 24 June 2025. The information is provided in summary form and does not purport to be complete. It is not intended to be relied upon as advice to investors or potential investors and does not take into account your personal circumstances or financial situation. Investors should conduct their own independent research and obtain professional advice before making any investment decisions.

This presentation may contain forward-looking statements. These statements are based on management's current expectations and beliefs and are subject to a number of risks and uncertainties that could cause actual results to differ materially from those described in the forward-looking statements. Straker Ltd. does not undertake to update or revise any forward-looking statements, or to publish prospective financial information in the future, regardless of whether new information, future events or any other factors affect the information contained in this presentation, other than as required by applicable law and ASX Listing Rules.

While the information contained in this presentation has been prepared in good faith, neither Straker Ltd. nor its directors, officers, employees or agents give any representation or warranty, express or implied, as to the accuracy, reliability, or completeness of the information.

This presentation is not an offer or invitation for subscription or purchase of securities or other financial products. It has been prepared in compliance with the ASX Listing Rules.

All figures in NZD unless otherwise stated.

FY25 refers to the financial year April 1 2024 to March 31 2025.